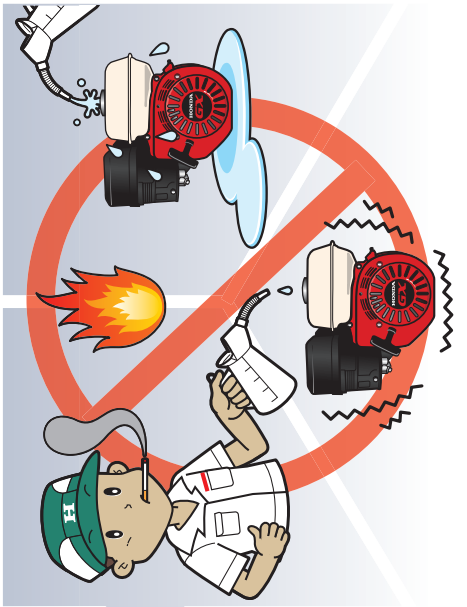




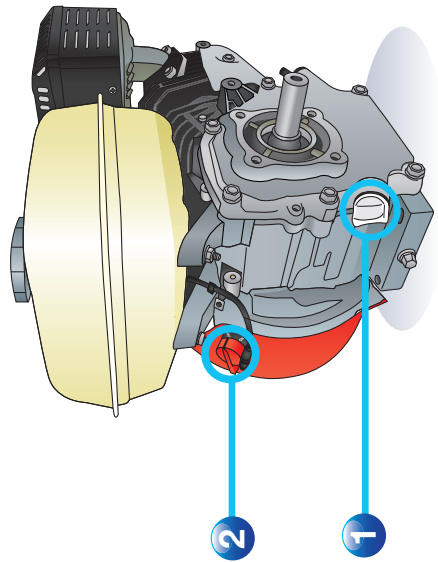
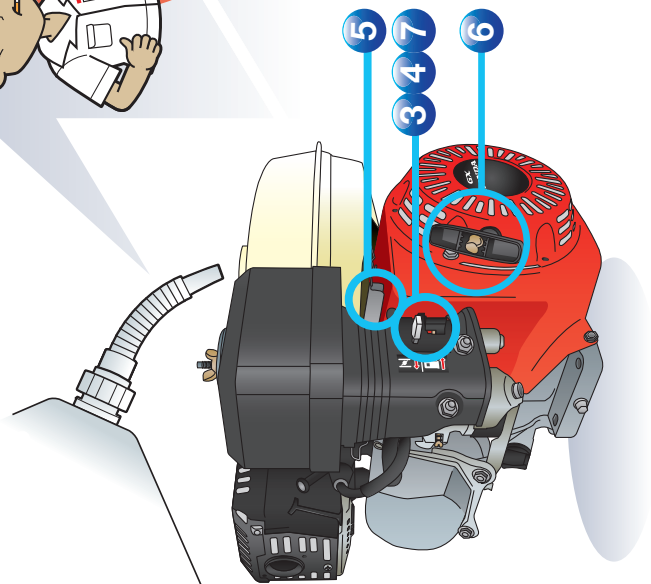
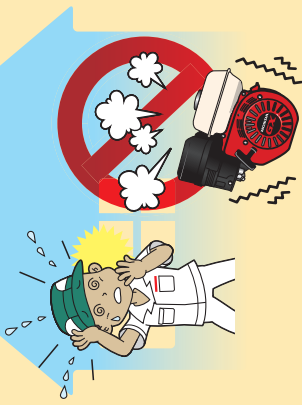
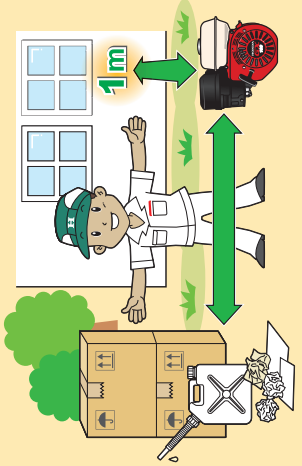
* Read and understand the Owner's Manual before operating the engine.



Safety! be careful!

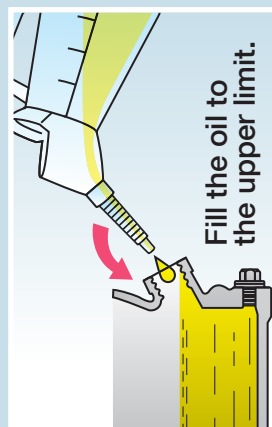
✓ Safety! Be careful!

✓ Do not use inside house

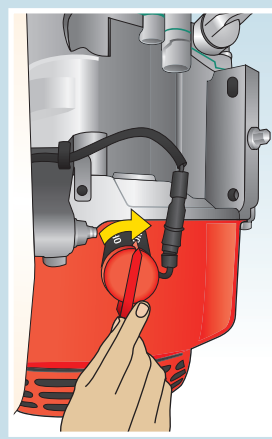


How to start

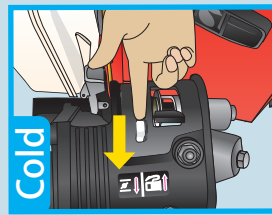
1 Check engine oil



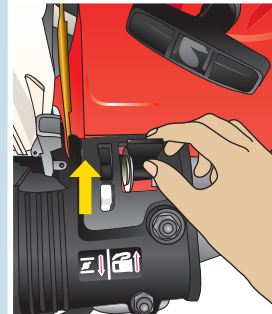
2 Switch ON



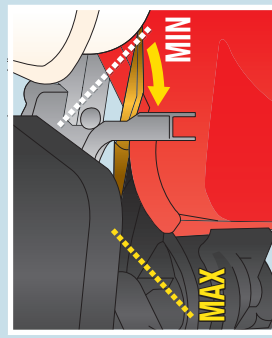
3 Choke ON/OFF



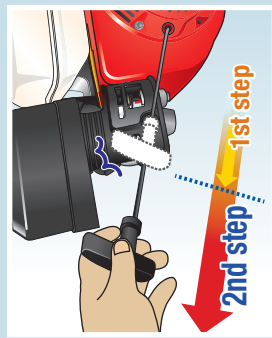
4 Fuel cock ON



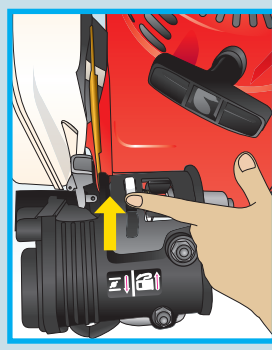
5 Throttle lever



6 Start



7 (Choke off)



How to stop

2

5

2

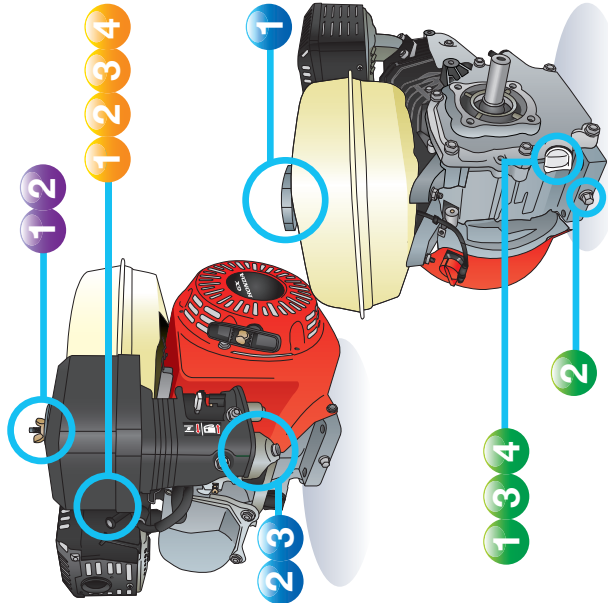


Maintenance Schedule

Regular service Period	Before each use	First month or 20Hours	Every 3 months or 50Hours	Every 6 months or 100Hours	Every year or 300Hours
Engine Oil	● check fill/add	⊙ replace	■ clean	⊙ replace	
Air Cleaner	● check		* clean		
Spark Plug				▲ check/readjust	⊙ replace
Spark arrester (applicable types)				■ clean	■ clean
Fuel filtration cup					▲ check/readjust
Idle speed					▲ check/readjust
Valve Clearance					▲ check/readjust
Combustion chamber					Every 500Hours
Fuel tank and filter					■ clean
Fuel tube					Every 2years

Take the engine to a Honda servicing dealer.

*Clean the aircleaner when used in dusty areas every 10hours or once a day



▶ Spark Plug

1. Remove the spark plug with a spark plug wrench.
2. Inspect the spark plug. The gap should be 0.7-0.8mm (0.029-0.031 in).
3. Clean the spark plug with a wire brush.
4. Reinstall the spark plug and torque to the specified value.

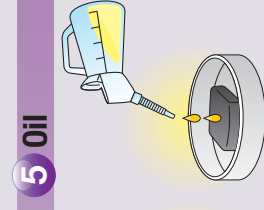
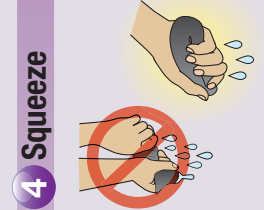
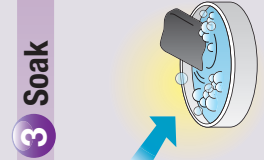
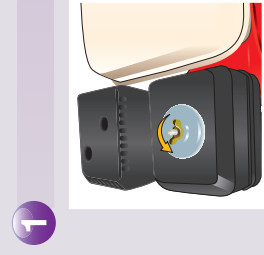
▶ Engine Oil

1. Check the oil level with the dipstick.
2. Add oil to the correct level.
3. Use the recommended oil (API service category SJ or later, SAE 10W-30).
4. Do not overfill. The level should be between the 'UPPER' and 'LOWER' marks.

▶ Prolonged storage

1. Add a fuel stabilizer to the fuel tank.
2. Run the engine for a few minutes to circulate the stabilizer.
3. Change the oil and clean the air filter.

▶ Air Cleaner Element



* Read and understand the Owner's Manual before operating the engine.