

SHORE ISOLATION PANELS

ROLEC
Global *Marina* Services



THE SHORE ISOLATION PANEL Range

A wide range of isolation panels to suit your electrical systems.

PRODUCT FEATURES

- Localised main isolation switch for the marina
- Provides isolation, current protection and optional fault current protection
- All electrical panels manufactured to suit each marina's individual requirements and electrical design
- GRP, stainless steel or technopolymer enclosures
- Switchgear variants: 6amps to 2000amps (1Ø or 3Ø options)
- Able to accommodate all switching and monitoring management solutions
- Designed and built to suit all incoming and ongoing cable types and sizes
- IPX5 Rated
- Wall, ground (root) or deck mountable
- Form II panels available
- ABS cable entry covering shroud



Multiple Switchgear
Arrangements



Bespoke
Manufacturing



UV
Stabilised



CE
Certified



IP44 - IP66
Weather Proof



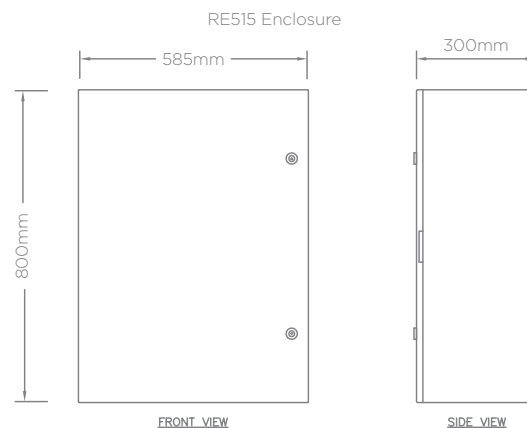
Strong
& Durable



SPECIFICATIONS

CHARACTERISTICS

| | |
|-----------------------|---|
| Materials | GRP, Stainless Steel or Technopolymer Enclosures |
| Dimensions | <p>Technopolymer: (W x H x D) RE512: 230mm x 316mm x 135mm</p> <p>GRP: (W x H x D) RE513: 405mm x 650mm x 200mm RE514: 515mm x 650mm x 250mm RE515: 585mm x 800mm x 300mm RE516: 800mm x 1060mm x 350mm</p> <p>Stainless Steel: (W x H x D) S004E: 400mm x 600mm x 200mm S005E: 500mm x 700mm x 250mm S006E: 600mm x 800mm x 250mm S007E: 800mm x 1000mm x 300mm</p> |
| Operating Temperature | -30°C to +60°C (Installed and Operated Within Multiple Climates from Around the Globe) |
| IP Rating | IP44 To IP66 Depending On Enclosure Type |
| Compliances | <p>BS EN 61439-1, BS EN 61439-2 BS EN 62208 CE Certified Low Voltage Directive 2014/35/EU UV Resistance EN 62208 BS EN IEC 60695-2 Glow Wire Tested IK8 to IK10 Rated Enclosures</p> |
| Typical Weight | 10kg (Empty RE515) |

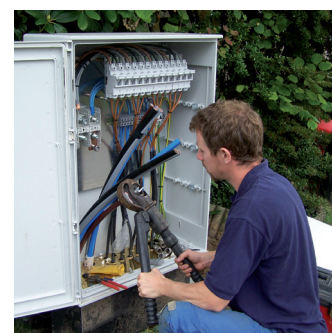


ELECTRICAL

| | |
|------------------------|--|
| Format | 1 |
| Voltage | 230v or 400v (1Ø or 3Ø) |
| Isolation | Isolator/RCD |
| Overcurrent Protection | MCCB/MCB or Fuses |
| Fault Current | RCBO/RCD |
| Terminals | Tunnel/Bolt-on Sized to Suit Incoming & Outgoing Cable |
| Earthing | Brass Earth Plate & Earth Terminals |

OPTIONS

- Fault current protection
- Form 2 panels
- Volt & amp meters
- Phase indicators



Images are for marketing purposes only and are not contractual © 2017



Head office contact:
 t: +44 (0) 1205 724754
 f: +44 (0) 1205 724876
 rolec@rolecserv.co.uk

Rolec Services Ltd
 Ralphs Lane, Frampton West
 Boston, Lincolnshire
 UK. PE20 1QU

@RolecMarina
www.rolecserv.com

MSDS-0011