

SMARTCARD METER

ROLEC
Global Marina Services



The SMARTCARD METER

The Rolec Smartcard meter is a cost effective and reliable way of managing berth electric supplies.

PRODUCT FEATURES

- Prepaid card operated meter
- Class 1 accurate smartcard meter complete with digital display
- MID approved
- Re-usable waterproof smartcards
- Easy to operate software
- USB card reader/writer
- Secure tariff management
- Audible low credit warning
- Visual low credit warning
- Unused credit can be refunded back onto the card
- Smartcards are unique to each sites computer software



Re-usable
Smartcards



Easy To
Use Software



CE
Certified



Strong
& Durable

SPECIFICATIONS

CHARACTERISTICS

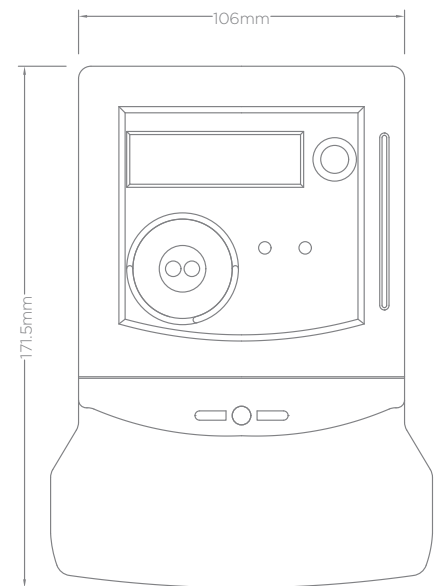
Dimensions	106mm x 171.5mm (W x H)
Operating Temperature	-25°C to +55°C (Installed and Operated Within Multiple Climates from Around the Globe)
IP Rating	IP51
Compliances CE	IEC 6205-11 IEC 62053-21 IEC 62053-31 IEC 62056-21 EU Directive 2014/32/EU
Typical Weight	0.54kg

ELECTRICAL

Voltage	230V (AC)
---------	-----------

OPTIONS

- Fits all Rolec pedestals
- Can be retrofitted onto existing pedestals
- Card printing/branding available



Images are for marketing purposes only and are not contractual © 2017



Head office contact:
t: +44 (0) 1205 724754
f: +44 (0) 1205 724876
rolec@rolecserv.co.uk

Rolec Services Ltd
Ralphs Lane, Frampton West
Boston, Lincolnshire
UK. PE20 1QU

MSDS-0016
@RolecMarina
www.rolecserv.com