



THE DISTRIBUTION UNIT Range

A wide range of electrical distribution units to suit your electrical systems.

PRODUCT FEATURES

- Localised distribution of electrical circuits including circuit protection
- Provides isolation, current protection and optional fault current protection
- All electrical panels manufactured to suit each marina's individual requirements and electrical design
- GRP, stainless steel or technopolymer enclosures
- Switchgear variants: 6amps to 2000amps (1Ø or 3Ø options)
- Able to accommodate all switching and monitoring management solutions
- Designed and built to suit all incoming and ongoing cable types and sizes
- IPX5 Rated
- Wall, ground (root) or deck mountable
- Form II panels available
- ABS cable entry covering shroud



Multiple Switchgear Arrangements



Bespoke Manufacturing



UV Stabilised



CE Certified



IP44 - IP66 Weather Proof



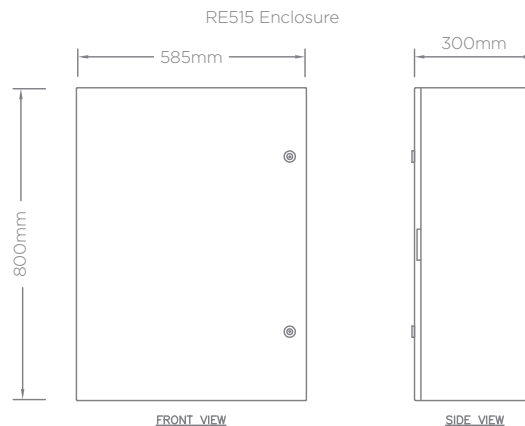
Strong & Durable



SPECIFICATIONS

CHARACTERISTICS

Materials	GRP, Stainless Steel or Technopolymer Enclosures
Dimensions	<p>Technopolymer: (W x H x D) RE512: 230mm x 316mm x 135mm</p> <p>GRP: (W x H x D) RE513: 405mm x 650mm x 200mm RE514: 515mm x 650mm x 250mm RE515: 585mm x 800mm x 300mm RE516: 800mm x 1060mm x 350mm</p> <p>Stainless Steel: (W x H x D) S004E: 400mm x 600mm x 200mm S005E: 500mm x 700mm x 250mm S006E: 600mm x 800mm x 250mm S007E: 800mm x 1000mm x 300mm</p>
Operating Temperature	-30°C to +60°C (Installed and Operated Within Multiple Climates from Around the Globe)
IP Rating	IP44 To IP66 Depending On Enclosure Type
Compliances	<p>BS EN 61439-1, BS EN 61439-2 BS EN 62208 CE Certified Low Voltage Directive 2014/35/EU UV Resistance EN 62208 BS EN IEC 60695-2 Glow Wire Tested IK8 to IK10 Rated Enclosures</p>
Typical Weight	10kg (Empty RE515)

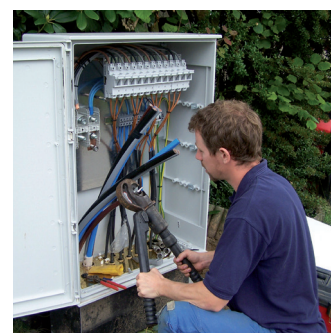


ELECTRICAL

Format	1
Voltage	230v or 400v (1Ø or 3Ø)
Isolation	Isolator/RCD
Overcurrent Protection	MCCB/MCB or Fuses
Fault Current	RCBO/RCD
Terminals	Tunnel/Bolt-on Sized to Suit Incoming & Outgoing Cable
Earthing	Brass Earth Plate & Earth Terminals

OPTIONS

- Fault current protection
- Form 2 panels
- Volt & amp meters
- Phase indicators



Images are for marketing purposes only and are not contractual © 2017



Head office contact:
 t: +44 (0) 1205 724754
 f: +44 (0) 1205 724876
 rolec@rolecserv.co.uk

Rolec Services Ltd
 Ralphs Lane, Frampton West
 Boston, Lincolnshire
 UK. PE20 1QU

MSDS-0010
 @RolecMarina
 www.rolecserv.com